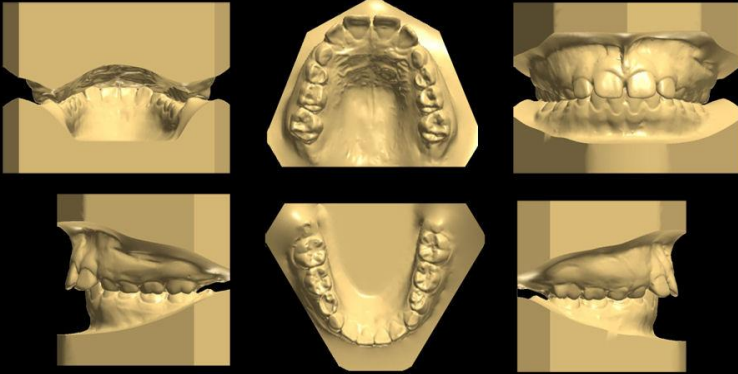


Digital Models



Smile Tru Clear Positioners

Overview

There are various ways in which teeth can be moved/straightened.

Some options are:

- Fixed- with wires and brackets
- Removable – aligners

Due to advances in 3D printing (additive manufacturing) equipment, laser scanners and computer aided design there is a new way to straighten your teeth discreetly. This is perfect for someone who wants their teeth straightened but does not want anyone to know that they are having treatment.

This aesthetically pleasing method of moving teeth also has the added advantage of being removable for cleaning the dentition, eating and drinking. If you have always longed for straight teeth, but the thought of wires and brackets deterred you, then Smile TRU could be for you.

In cases where there is crowding of the teeth and there is not enough room for them all to be straightened, there are basically 3 different methods of creating space:



Call us on
01542 886251

1. Expanding the width or length of the dental arch. Clear positioners are not great at achieving this but there are very discreet appliances that can be used in conjunction with clear positioners to achieve this. These appliances are generally not visible from the front.
2. IPR – Interproximal Reduction which is essentially removing some enamel from some of the teeth to make them very slightly smaller.
3. Extractions - This is the most extreme method and is not really suitable for use with clear positioners.

Smile Tru

Smile TRU is the brand name of the clear positioners. The procedure is a series of clear plastic moulds that fit over your teeth to gently guide them from their current, to their desired position. Smile TRU is manufactured under exacting specifications using the very latest in digital production methods and additive layer manufacturing devices (3D printers). Smile TRU features the added advantage of various levels of implementation depending on the types of imbalances present. If you are looking for a discreet solution, try Smile TRU.

How does it work?

Each positioner is designed to fit over the teeth and apply gentle forces to gradually move the teeth. The positioners are worn until they feel moveable, usually after around 14 days, after which you then move onto the next positioner which continues to move the teeth to the desired position. This step by step approach ensures that you are only applying gentle forces to the teeth which is both good orthodontic practice and minimises any discomfort when wearing the positioner.



Call us on
01542 886251

The positioner will feel fairly tight when it is first placed and some mild discomfort may be experienced, but this soon settles down. This is because the teeth are being moved slowly by the positioner to create space or alignment. One or more teeth may become temporarily sensitive when placing new positioners. Impact on speech is minimal and you should soon get used to wearing them. Talking with the positioners in place will speed up the adaptation process. Some patients experience an excess of saliva when starting treatment, this is normal.

Benefits of Smile TRU

- Virtually invisible
- Comfortable
- Minimal impact on your daily life
- Removable for cleaning, eating and drinking
- Good oral hygiene can be maintained
- You can be treated by your regular dentist (as long as they are registered and trained to use the system)

How to care for Smile Tru Positioners

- The tooth positioners should always be placed in the provided retainer box when not in use.
- Keep the retainer box with positioners out of the reach of children and away from the family dog.
- The tooth positioners should not be exposed to extreme heat.
- Use suitable cleaner to clean the positioners. ***DO NOT*** use chemicals or toothpaste as these can damage the positioners.
- Positioners should be removed when eating and drinking (except water).



Call us on
01542 886251

Limitations

Clear positioners are not suitable for all situations and is not a direct replacement for full Orthodontic treatment. They are however capable of treating a wide range of situations in the adult sector. Consult your dentist to find out if you are suitable for Smile TRU.

What the patients say

"I can't believe how I could have Orthodontic treatment and my friends didn't even know, well until I showed them my positioners. Traditional orthodontics were out due to my high profile job, so this suited me perfectly. You can't stop me smiling now"

Anon

Finding out more is easy...

To find out more, or to book in for a consultation, simply give us a call on the number below or email us:



t: 01542 886251

e: info@keithdental.co.uk

w: www.keithdental.co.uk